



Manufacturer of
STRICKLIN Model SP-2
 Pneumatic Chemical & Methanol Pump

"PUMP OF QUALITY"

- Pump consists of 300 Series Stainless Steel
 Ideal for the Offshore Environment
- Special Fine Metering Speed Control Valve for
 pumping low amounts of Chemical
- Tubing connections on air/gas supply manifold
- Mechanical plunger and lower plate seals for
 extended life and simple maintenance
- For continuous operating - Maximum recommended
 discharge pressure - 5,000 PSI with 1/4" plunger
- Plunger stroke speed may be adjusted while pumping
- 1/4", 3/8", & 1/2" plunger sizes available
- Plunger consist of Heat Treated 440C Steel - Alternate
 Plunger Materials Available for Low PH Chemicals
- Operates fine on wet air/gas supply
- Weighs 12 pounds
- Pump parts interchangeable with Stonebor Model C6
 pump parts



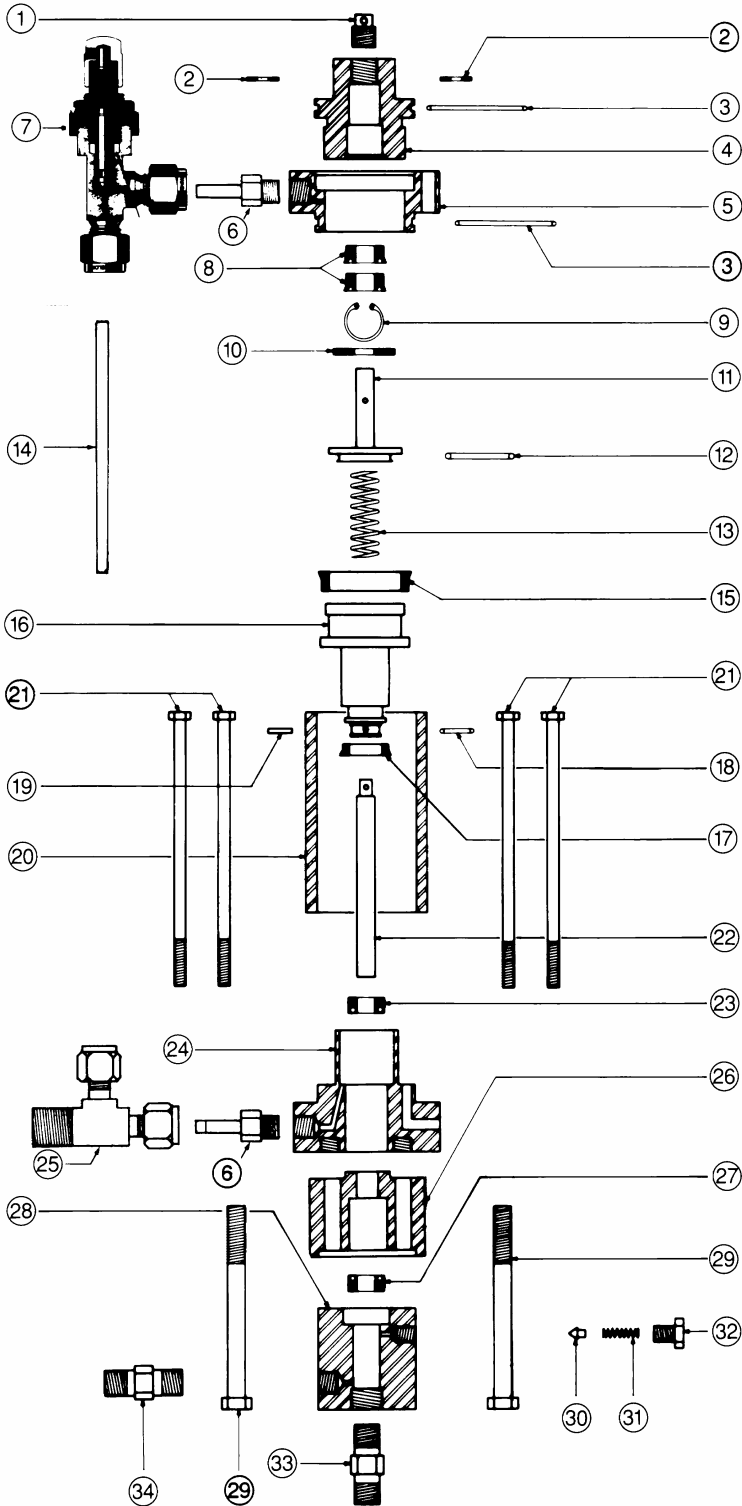
PUMP MODEL	PLUNGER SIZE	MAXIMUM DISCHARGE PRESSURE	CHEMICAL DELIVERY (GPD)
SP-2-250	1/4"	5,000 PSI	2 Qts - 12 GPD
SP-2-375	3/8"	2,500 PSI	1 Gal - 26 GPD
SP-2-500	1/2"	1,500 PSI	2 Gal - 50 GPD

(1) Maximum Recommended Supply Pressure 140 PSI.

(2) Maximum Discharge Chemical Delivery based on 60 Strokes per Minute.

STRICKLIN Model SP-2

Diagram & Parts List



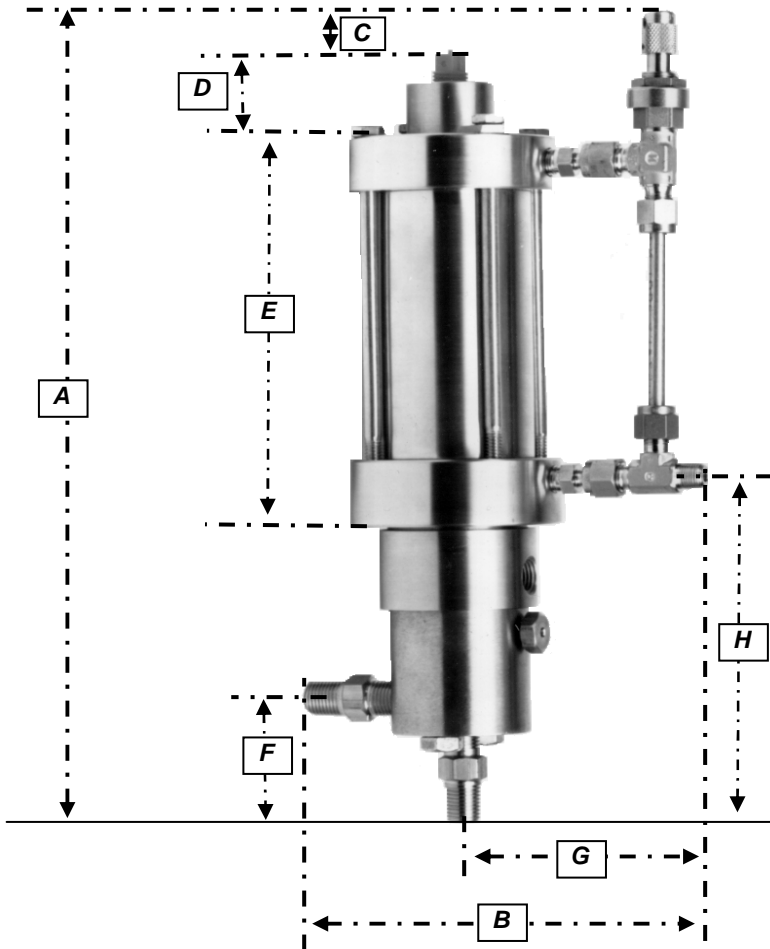
Model SP-2-XXX

Ref. No.	Part No.	No. Req	Description
1	SP-5-4	1	Exhaust Vent Plug
2	SP-2-9	2	Exhaust Valve Housing Retainer Tabs
3	SP-5-37	2	Exhaust Valv Housing & Upper Plate O Ring
4	SP-2-6	1	Exhaust Valve Housing
5	SP-2-8	1	Upper Cylinder Plate
6	SP-5-3	2	Tube Adapter
7	SP-5-2	1	Fine Metering Speed Control Valve
8	SP-5-36	2	Exhaust Valve Seal
9	SP-5-5	1	Exhaust Valve Seal Retainer Snap Ring
10	SP-5-12	1	Exhaust Valve Bumper Washer
11	SP-5-10	1	Exhaust Valve
12	SP-5-6	1	Exhaust Valve O Ring Seal
13	SP-5-11	1	Exhaust Valve Spring
14	SP-2-5	1	Pressure Supply Tube
15	SP-5-34	1	2" Piston Seal
16	SP-2-3	1	Piston Body
17	SP-2-4	1	1 1/8" Piston Seal
18	SP-5-14	1	Plunger Retainer Pin
19	SP-5-15	1	Plunger Retainer Pin O Ring
20	SP-2-7	1	Pump Cylinder
21	SP-2-17	4	Pump Cylinder Bolt
22	SP-5-16-XXX	1	Plunger
23	SP-5-23-XXX	1	Lower Plate Seal
24	SP-2-10	1	Lower Cylinder Plate
25	SP-5-7	1	Male Run Tee
26	SP-2-11	1	Lower Plate Adapter
27	SP-5-24-XXX	1	Plunger Seal
28	SP-5-25-XXX	1	Fluid Head
29	SP-5-33	2	Fluid Head Bolt
30	SP-5-26	1	Bleeder Poppet
31	SP-5-27	1	Bleeder Spring
32	SP-5-28	1	Bleeder Screw
33	SP-5-38S	1	Suction Check Valve
34	SP-5-38D	1	Discharge Check Valve
	SP-2-20	1	Lubricator (Not Shown)

(XXX) - Specify Plunger Size



Stricklin Model SP-2 Dimensions



A	12.500"
B	7.000"
C	1.125"
D	1.125"
E	5.750"
F	1.825"
G	4.250"
H	5.125"